



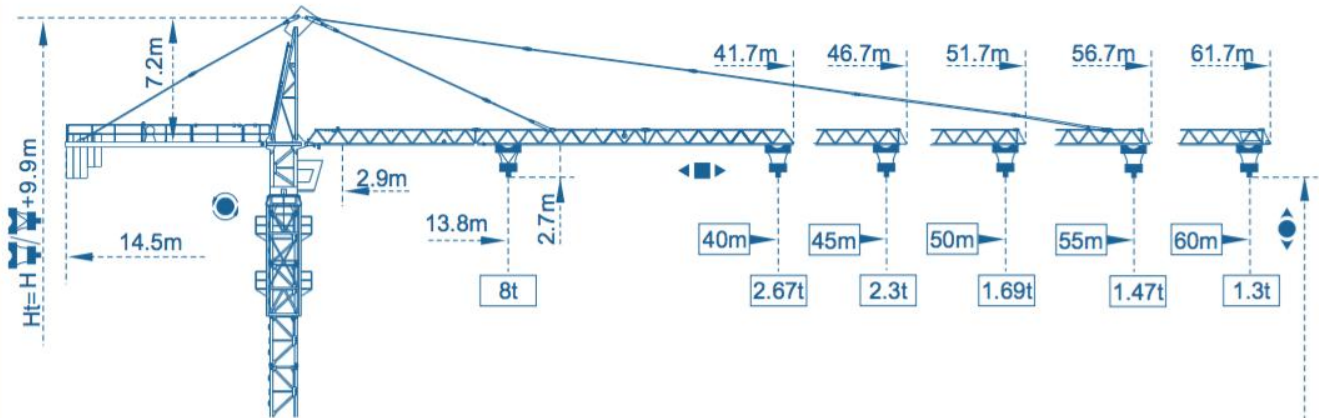
# STT 6013-8

*Experts in the field*



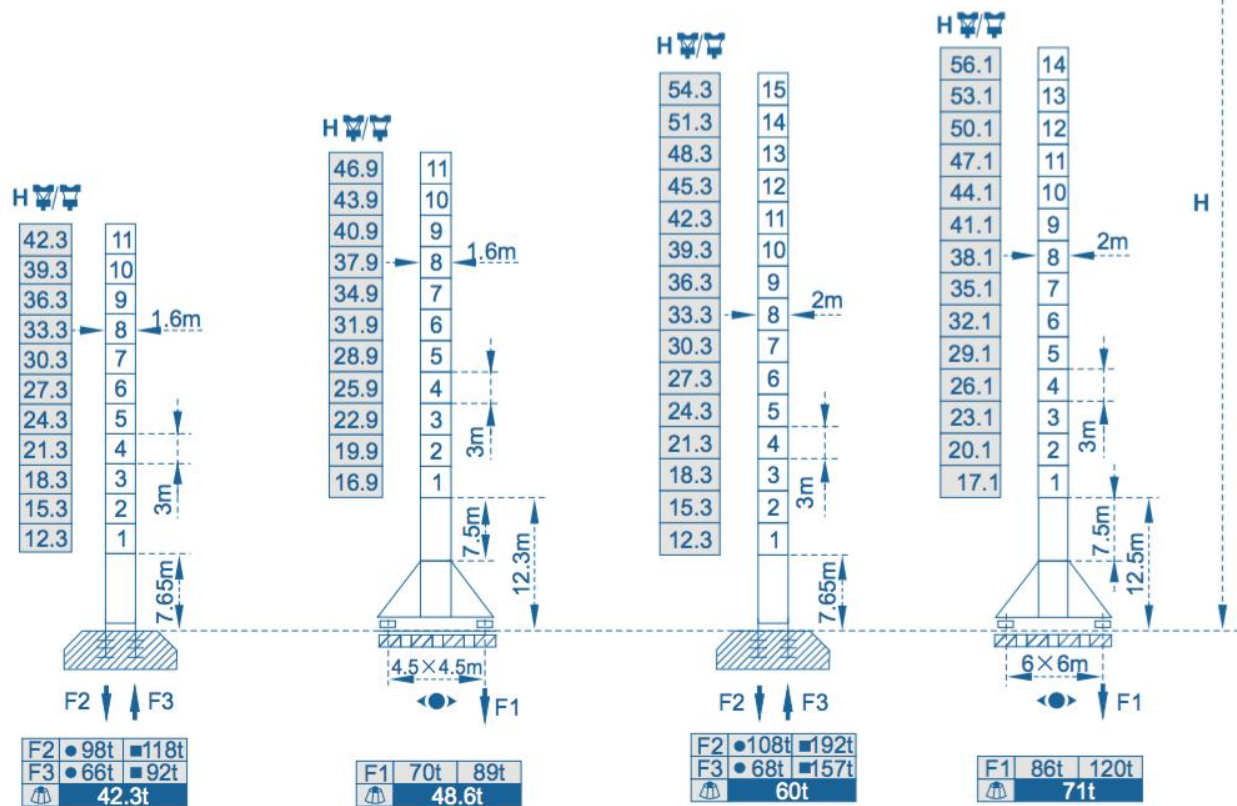
[www.starcranes.com](http://www.starcranes.com) [info@starcranes.com](mailto:info@starcranes.com)

## Outline Dimensions



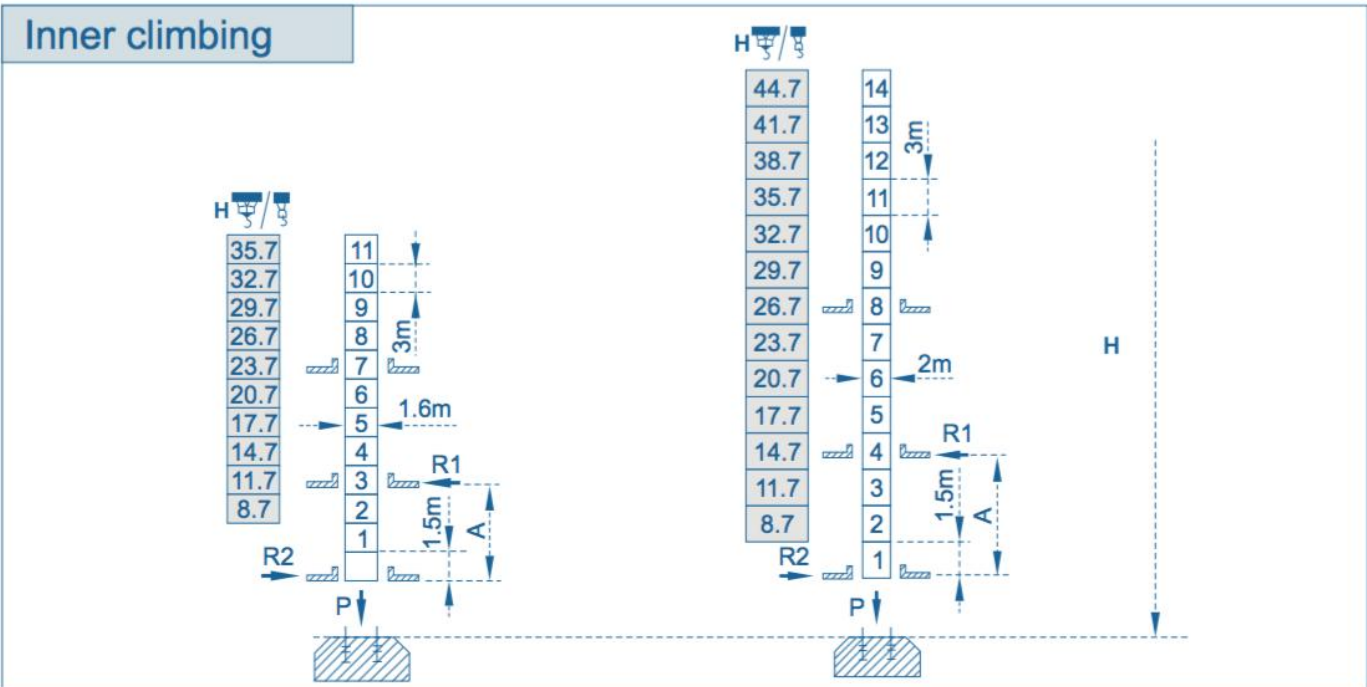
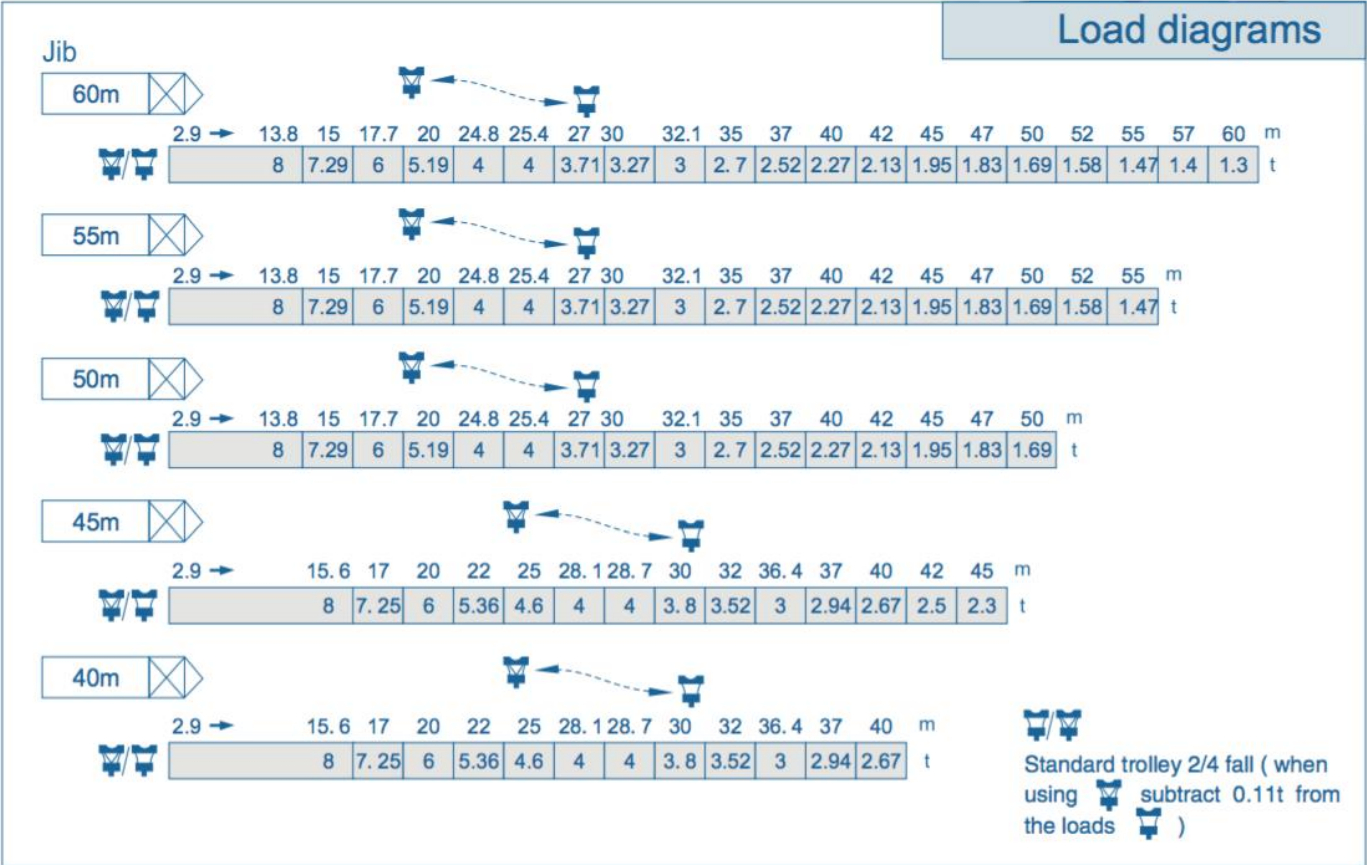
## Mast $\varnothing 1.6m \times 1.6m$

## $\varnothing 2m \times 2m$



● in service      ■ out of service  
 Without load and ballast with longest jib and maximum height

F=Reactions



Specifications Mechanisms						
Mechanisms	Motor type	Speeds m/min		Capacity t.	Rope lenght	Motor kW
Hoisting	40LVF20 ⬆️	2 fall	0-37.5	4	460m >460m★	30
			0-75	2		
		4 fall	0-18.75	8		
			0-37.5	4		
	50LVF20 ⬆️	2 fall	0-41	4	460m >460m★	37
			0-82	2		
		4 fall	0-20.5	8		
			0-41	4		
	60LVF20 ⬆️	2 fall	0-50	4	550m >550m★	45
			0-100	2		
		4 fall	0-25	8		
			0-50	4		
40RPC20B ⬆️	2 fall	0-37.5	4	460m >460m★	30	
		0-75	2			
	4 fall	0-18.75	8			
		0-37.5	4			
45RCS20 ⬆️	2 fall	0-40	4	478m >478m★	33	
		0-80	2			
	4 fall	0-20	8			
		0-40	4			
Trolleying	XD96L ◀▶	15-38-58			95N.m	
	6DCV ◀▶	0-58			5	
Slewing	OMD45 ⦿	0-0.7r/min			2×4.4	
	RCV95 ⦿	0-0.7r/min			2×95N.m	
Travelling	RT443 ◀▶	0-12.5-25			4×1.7/3.4	
	18TVF ◀▶	0-25			4×3.4	

★ To be supplied according to client's specific requirements

This commercial documents is not legally bindig.  
For any technical information, please refer to  
the corresponding instructions.

